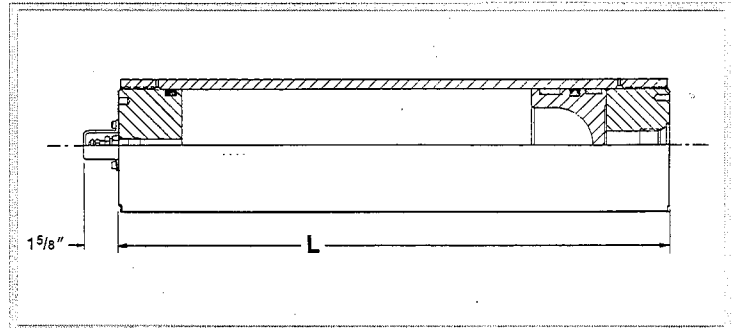


Accumulators

Piston Accumulators

ISO 9001
CERTIFIED

SERIES	PRESSURE MAXIMUM PSI	O.D. DIA. IN.	I.D. DIA. IN.	GAS VOLUME GAL.	LENGTH IN.	DRY WEIGHT LB.
AA	3,000	4 5/8"	4"	1/2	16	39
				1	25	50
				1 1/2	34	61
				2	43	71
				2 1/2	52	82
				3	61	93
BB	5,000	5 1/8"	4"	1/2	16	56
				1	25	77
				1 1/2	34	97
				2	43	118
				2 1/2	52	138
				3	61	159
CC	3,000	8"	7"	2 1/2	25	177
				5	42	227
				7 1/2	55	277
				10	70	327
				12 1/2	85	377
				15	100	427
				17 1/2	115	477
				20	130	527
				23	148	587
				25	159	624
DD	5,000	8 5/8"	7"	2 1/2	25	235
				5	42	320
				7 1/2	55	404
				10	70	489
				12 1/2	85	574
				15	100	658
				17 1/2	115	743
				20	130	828
				23	148	929
				25	159	991
EE	2,000	7 5/8"	7"	2 1/2	25	145
				5	42	175
				7 1/2	55	206
				10	70	236
				12 1/2	85	267
				15	100	297
				17 1/2	115	328
				20	130	358
				23	148	395
				25	159	417
GG	6,000	9"	7"	2 1/2	25	272
				5	42	379
				7 1/2	55	485
				10	70	592
				12 1/2	85	699
				15	100	805
				17 1/2	115	912
				20	130	1019
				23	148	1147
				25	159	1225



SEAL KITS		
SERIES	TYPE SEAL	PART NO.
AA, BB	Nitrile Viton	0830052 0830053
CC, DD, EE, GG	Nitrile Viton	0830054 0830055

- Safety vents in gas and liquid ends warn of internal pressurization.
- Aluminum piston with anodized finish resists pitting.
- T-Seal with dual back-up rings assure separation with minimum drag.
- Dual outboard wearstrips prevent piston rub and provide larger balanced bearing areas.
- Oil or water service availability.
- -20°F to 275°F operating temperature range.
- Optional safety fuse.
- Custom designed to your specifications.

Call or fax us with your
special requirements!