



Building exceptional People-Products-Place-Partners

yorkpmh.com

706 Willow Spring Lane  
York, PA 17406

717-764-8855

# NEWS

ISSUE NO 2 | Q2 2022 | VOLUME 3

"Great vision without great people is irrelevant." --Jim Collins

This Quarter's theme:  
**YPMH Partners and Communication**

### Around YPMH Highlights

- U.S. Navy Highlights
- Team Member News and Key Dates

### Customer Highlights and Partnerships

- Commercial Customer Case Studies
- Pennsylvania Talent Pipeline Program

### Supplier Highlights & Quality Corner

- Shout-out to Our Vendor of the Quarter
- Bear-Loc Projects



## How We Partner with Our Commercial and Military Customers

By Michele Baker Thomas, Ph.D., Business Manager

How many mechanical devices have you encountered that perform reliably for decades? In an age of planned obsolescence, YorkPMH custom hydraulic products are known globally and across sectors using hydraulics, for their reliability and durable longevity.

We serve commercial and military customers. What do they both seek? Outstanding, failsafe performance. For the military, our products assure mission success, safety and survivability where exact position must be held for long periods of time in harsh conditions. Likewise, commercial customers rely on precision for business success, and failsafe reliability to keep operators, equipment and materials safely operating, 24/7. In this issue we present a few short case studies illustrating why YorkPMH products are the solution of choice for our commercial customers. For a deeper dive and more illustrated case studies and videos, please visit our website, YorkPMH.com. We'll present military cases in a future issue, for now check out the Navy stories on page 5.

### Bear-Loc® Offers Reliable Performance, Safety Solutions

Customers rely on our Bear-Loc system to perform successfully and protect workers in a wide variety of settings, from precision manufacturing in large presses, to construction equipment holding loads high above the heads of operators, passersby, and other equipment, to applications such as dams and bridges where water needs to be controlled.

equipment, to applications such as dams and bridges where water needs to be controlled, to name a few. Here, we highlight Bear-Loc's role in precision testing, required in many industries.

### Crash Test Walls Save Lives

It's a scene nobody ever wants to see: a fully loaded 80,000-pound tractor trailer hurtling straight at you and your vehicle.

With its crash test wall, this leading U.S. Automaker recreates the scene using crash dummies. Their rigorous vehicle testing saves countless lives. Of course, the effectiveness of the test requires that the crash wall doesn't budge. What keeps the crash wall from moving? York Precision's Bear-Locs®.

We asked the lead engineer to explain: Why Bear Locs®? "The need was for large holding power. We also like Bear-Locs® failsafe reliability. The infinitely variable position makes it easy to adapt to different projects. The moveable section of the wall has 90-degree impact and can turn 30 degrees in either direction, then lock into place. Certainly we're happy with the long term service record of Bear-Locs® *[now over 30 years old]*. We appreciate the way the company has adapted the product to our specific needs."

### Infinite Control in Wind Tunnels

A 35-foot Bear-Loc® raises then locks into position a helicopter undergoing critical performance tests in the Boeing Vertical/Short Takeoff and Landing Wind Tunnel (BVWT), located near Philadelphia. In that facility, aerodynamic vehicles—from aircraft to NASCAR racers—undergo force, pressure, flight control, vibratory, and dynamic tests. These tests are meaningless if the lock cannot stay put.

Why a Bear-Loc®? Boeing Wind Tunnel lead engineer Erik Hoet explains: "We needed the Bear-Loc's positive locking ability—it locks when the hydraulic pressure is off—and we needed its capacity to lock in any position."

Boeing also loved the value: from its first installation in 1968, this Bear-Loc® did not require an overhaul until 2015. The refurbished Bear-Loc® boasts 120,000 pounds of locking power and resides below the test floor.

See more Bear Loc case studies on page 6!

(Crash Test and Bear-Loc® and Wind Tunnel and Bear-Loc® pictured below)



### Quality Corner

By Jeff Shellenberger, Quality Manager

Recently we completed two very different custom Bear-Loc® projects. One is for a pilot

project, the other is for a 36 year old application of a rotary Bear-Loc®. How are we able to do that? For the latter, you might think we would need to hop into a DeLorean and head on back to 1986, but the answer is simpler: our core values.

Our values encompass four essential "P"s": For us it all starts with **People**, we value exceptional employees and from Sales to Shipping we have the best! The **Place**? You guessed it here at York Precision. We've created a thriving work environment, characterized by teamwork, celebration, and empowerment. We value quality **Products**, demonstrated by *reliability, and timeliness and when the going gets tough it's our Partners that put us on top*. We value happy customers and vendors, sharing in meaningful *communication, appreciation, and success*. This is how we deliver quality products today as we did 36 years ago, with a team as dependable, innovative, and precise as our Bear-Loc®, and with an even greater commitment to excellence.

[REQUEST A QUOTE](#)



### St. Patrick's Day at YPMH!

Our employees enjoyed a St. Patrick's Day celebration honoring the Irish holiday. See page 3 for more details!

### YPMH Branding Materials!

Check out our new tablecloth and BearLoc banner using our company colors. These materials will be utilized at expos and fairs we're attending! In the meantime, check them out in our lobby.



### YPMH Welcomes Marcel!

**Welcome to YPMH!** In April, we welcomed Marcel van Niekerk to the YPMH team! Marcel joins the talented YPMH team as a Project Manager. He brings an enthusiastic and professional attitude to YPMH. Marcel was born and raised in South Africa and moved to America in 2018 with his wife and two children. When he's not at YPMH, Marcel loves to read, write, draw and be outdoors. We are so excited to have Marcel onboard and are eager to help him grow in his new role!

## Quarterly Highlights

### We Value Partnerships and People!

A few years ago we were surprised by a visit from an admiral who asked our general manager, How is this company able to make parts that no one else can?

(Shown at right, commendation medal from the Commander of Naval Supply)



Pennsylvania Talent Pipeline Program  
"Recruiting" Program Review  
East and South Central Regions

### [Pennsylvania Talent Pipeline Program](#)

York Precision Machining & Hydraulics is very proud to participate in a recruiting and retention program with other





manufacturing companies and education organizations in Pennsylvania to collectively build a pipeline of qualified candidates and, eventually, new employees. The program "Pennsylvania Talent Pipeline Program" involves more than 30 employer partners and 25 career and technical educators and are working together to help meet the hiring demand of employers who support the shipbuilding industry for the US Navy. We are proud participants in this program and look forward to hiring new employees who will grow with our company this year, and we are hopeful to continue finding great candidates in years ahead.

**Bear-Loc® in Active Service to Navy for over 50 years before its first refurbish**

Shown at right, the label from this Bear-Loc®, which serves in a testing environment (NSWC Carderock), was built by our predecessor company, the Hydraulics Division of AMF. Bear-Locs are built to last!



**York Precision Leadership Team sees Jim Collins!**

YorkPMH team members enjoyed insights from author and business performance researcher, Jim Collins (Built to Last, Good to Great, Level 5 Leadership) at the High Center Business Forum in Lancaster, PA. During the afternoon session, Jim gave us a homework assignment: develop and perfect your flywheel!

**St. Patrick's Day at YPMH**

Our employees enjoyed a St. Patrick's Day celebration honoring the Irish holiday with Irish food, "sporting the green," games and quality time together over the lunch hour! Prizes were won, laughs were had and Celtic music was played. Everyone had a great time and appreciated celebrating together and learning more about this classic Irish holiday.



**BearLoc® Case Studies Continued**

**Critical Testing Assures Tires Durability**

Imagine that you can provide locking capacity for linear or radial motion *instantly*—simply by removing hydraulic pressure. Imagine that it's bi-directional: Once pressurized it can instantly go in either direction. Imagine that you can design a system using a hydraulic locking actuator that can be infinitely positioned along its stroke, operating without manual intervention, and with no moving parts so that it lasts for years—decades even—in virtually any environment. Imagine that this locking system can be customized to your application's needs, whether it's in a small robot operating in a hazardous setting, or a powerful lock operating underwater, with over 4 million pounds of locking capacity.

Our patented Bear-Loc® Hydraulic Locking System does all this and more. Limited only by your imagination. Bear-Loc® offers the most reliable turnkey operation of any locking system on the market, with best-in-class safety and performance. With Bear-Loc®, it's



uptime all the time—money in the bank! It truly is a failsafe locking system so unique, that it can create new market advantages and opportunities for your company.

A global tire producer relies on our Bear-Loc® hydraulic locking system, made for them in 1990, to adjust and hold its test machines in a range of positions. These [critical tests assure the durability of its airplane tires](#) during various conditions, such as take-off, taxiing and landing. Near the busy year-end season, disaster struck. A cylinder made by another manufacturer was incorrectly operated which led to pulling the rod from the Bear-Loc® and thus damaging the lock. Until then, the Bear-Loc® had operated flawlessly for 30 years. In an instant this critical testing operation came to a complete halt. There was no process or product that could replicate Bear-Loc's® durable reliability and holding capacity. The customer regretted not having a spare Bear-Loc®. We received their damaged unit and, on an expedited basis, repaired their Bear-Loc® as well as supplied a cost-effective quote on a new one.

#### Shock Tube: Safe, Effective Destructive Testing

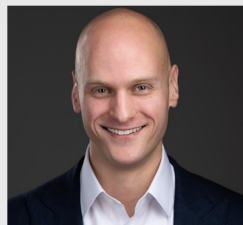
Designed by Architectural Testing, now Intertek, the Shock Tube allows building product manufacturers from around the country to find out whether their products can withstand the shock wave from a blast event, such as an explosion.

**On the Shock Tube, a Bear-Loc® secures safe, effective operation.** A piston moves to create the desired pressure and the Bear Loc®, which is the middle section in the photo, holds it in position. Travis Hoover, Intertek's manager in charge of the Shock Tube, explains how it works. "We're testing the ability of a product to withstand blast load effects of the positive and negative phases of a shock wave. Simply put, for a building window, let's say a bomb was detonated outside of a building, the positive phase effect is the pressure attempting to push into the building window. As pressure relieves in the building, the negative phase effect is trying to pull the window out of the building." Travis adds that the Shock Tube's original Bear-Loc® from 2008 is in place and works well for their needs, with no issues.

York Precision General Manager Dennis Goulden recalls meeting with a former executive of the company (now retired). "He flew all over the world trying to find a locking actuator that actually locks and does not move. He found us right in his back yard, so to speak. He said to me, 'You're the only one in the world, do you know that?'"

(See photos below from left to right of critical testing of tires with BearLoc® and a shock tube using a BearLoc®)

[CONTACT US](#)



#### Supplier Highlights

This quarter we highlight a supplier who went above and beyond requirements to provide excellent service. Thank you! We value your partnership!

When it comes to customer service, Aaron Gingrich (Sr VP/Financial Advisor) with the Sides Group of RBC Wealth Management nails it every time! Aaron has consistently held a very high standard of excellence when it comes to helping our employees enroll, change and upgrade their 401k investments through one on one meetings. Aaron is very knowledgeable and uses his experience to meet people right where they are. Whether they're new or seasoned financial investors, Aaron's assistance has been invaluable to YPMH. The Sides Group exists to make a positive difference every day in the lives of their clients by working with them to create greater security, increased confidence, reduced stress, and the opportunity to fulfill their potential. It is our pleasure to spotlight Aaron and the Sides Group!

Wishing you and yours a pleasant, safe and fruitful spring!

- The York PMH Team



York Precision Machining & Hydraulics  
706 Willow Spring Lane  
York, PA 17406

© 2018-2022 York PMH. All Rights Reserved. | [Privacy Policy](#)

[Preferences](#) | [Unsubscribe](#)